

VECO®  
JAPAN



# Hook Door Guard Bifold Latch

VECO ORIGINAL HARDWARE

# HOOK

## Stainless Steel Hook / ขอลับสมุทร

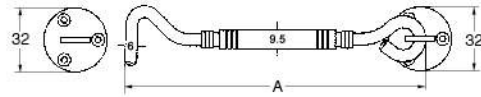
### No.770

Finish / ฝั :

AB, AC, SSSL, PB



Dimension



Description ຊື່	Size (A) ໜາວ (A)	Material ໝາກ
NO.770	4" 6" 8"	Stainless Steel SUS 304 ສະຕາເນສະ 304

### Finish Index



ANTIQUE BRASS AB  
ANTIQUE COPPER AC  
STAINLESS STEEL HAIR LINE SSSL  
POLISH BRASS PB

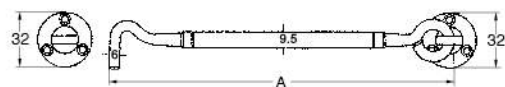
### WHZ

Finish / ฝั :

AB, AC, SSSL, PB



Dimension



Description ຊື່	Size (A) ໜາວ (A)	Material ໝາກ
WHZ	4" 6" 8"	Stainless Steel SUS 304 ສະຕາເນສະ 304

### Finish Index



ANTIQUE BRASS AB  
ANTIQUE COPPER AC  
STAINLESS STEEL HAIR LINE SSSL  
POLISH BRASS PB

# DOOR GUARD

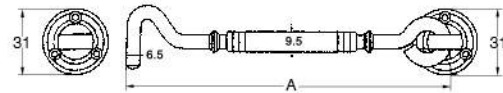
## Zinc Alloy Hook / ขอสับซิงค์

### PWZ1

Finish / ี :  
AB, AC, HLNI, PB



Dimension



Description ຮຸ່ນ	Size (A) ໝາດ (A)	Material ວັດຖຸ
PWZ1	4" 6" 8"	Zinc Alloy No.3 ຮິງຄ໌ອັລລອຍ ເນວຣ໌ 3

### Finish Index



ANTIQUE BRASS AB  
ANTIQUE COPPER AC  
STAINLESS STEEL HAIR LINE SSSL  
POLISH BRASS PB

## Zinc Alloy Door Guard / ບອກ້າ

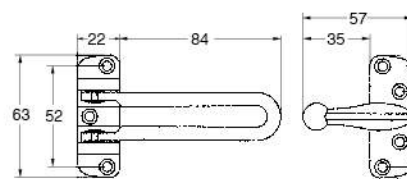
### PDZ2

Finish / ี :  
AB, AC, HLNI, PB

AB, AC, HLNI, PB



Dimension



Description ຮຸ່ນ	Material ວັດຖຸ
PDZ2	Zinc Alloy No.3 with ball bearing ຮິງຄ໌ອັລລອຍ ເນວຣ໌ 3 ແລະ ຊຸກປັ້ນ

### Finish Index



ANTIQUE BRASS AB  
ANTIQUE COPPER AC  
HAIR LINE NICKEL HLNI  
POLISH BRASS PB

# LATCH

## Bi Fold Latch / ตัวล็อก

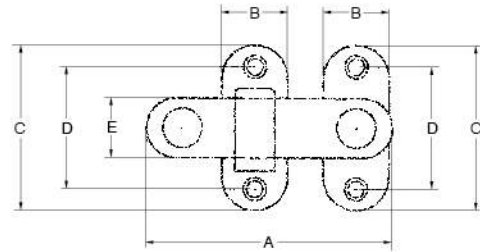
### CBL

Finish / ำ :

AB, AC, SSSL, PB, B-HL



Dimension



Description ขุ	Size / มม					Material
	A	B	C	D	E	
CBL75	75	20	50	37	18	Stainless Steel SUS 304 or Steel
CBL100	100	25	70	52	21	สแตนเลส 304 หรือเหล็ก

### Finish Index



ANTIQUE BRASS AB	ANTIQUE COPPER AC	STAINLESS STEEL HAIR LINE SSHL	POLISH BRASS PB	BRASS HAIR LINE B-HL
------------------------	-------------------------	---	-----------------------	----------------------------

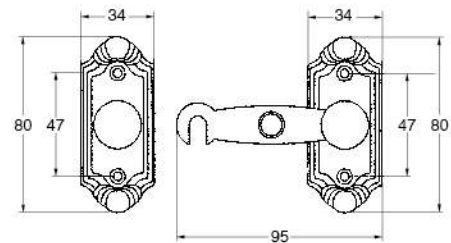
### CBL339

Finish / ำ :

AB, AC, HLNI, PB



Dimension



Description ขุ	Material วัสดุ
CBL339	Zinc Alloy No.3 ซิงค์อัลลอย เบอร์ 3

### Finish Index



ANTIQUE BRASS AB	ANTIQUE COPPER AC	HAIR LINE NICKEL HLNI	POLISH BRASS PB
------------------------	-------------------------	-----------------------------	-----------------------

# LATCH

## Zinc Alloy Latch / กลอนสำหรับหน้าต่างบานกระทุ้ง

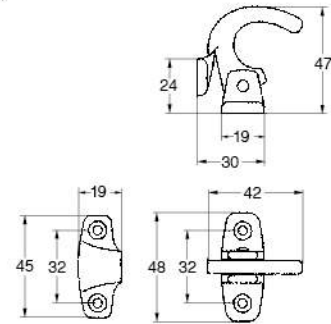
### No.38

Finish / ี :

AB, AC, HLNI, PB



Dimension



Description รุ่น	Material วัสดุ
NO.38	Zinc Alloy No.3 ซิงค์อัลลอย เบอร์ 3

### Finish Index



ANTIQU  
BRASS  
AB

ANTIQU  
COPPER  
AC

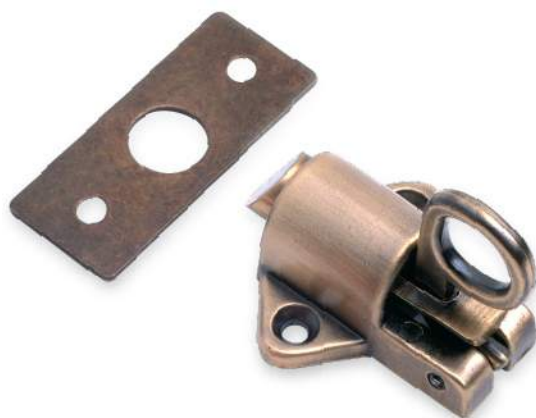
HAIR LINE  
NICKEL  
HLNI

POLISH  
BRASS  
PB

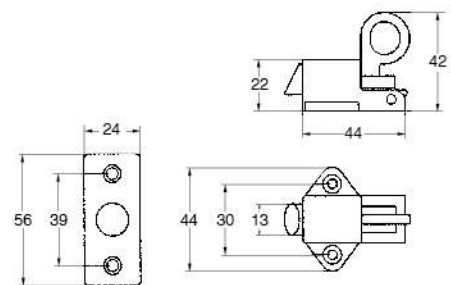
### WLS42

Finish / ี :

AB, AC, HLNI, PB



Dimension



Description รุ่น	Material วัสดุ
WLS42	Zinc Alloy No.3 ซิงค์อัลลอย เบอร์ 3

### Finish Index



ANTIQU  
BRASS  
AB

ANTIQU  
COPPER  
AC

HAIR LINE  
NICKEL  
HLNI

POLISH  
BRASS  
PB

